



Reva and David Logan
Center for the Arts
915 East 60th Street
The University of Chicago
Chicago, Illinois 60637
773.702.ARTS

Reva and David Logan Center for the Arts Performance Penthouse Technical Brochure



THE UNIVERSITY OF
CHICAGO

Arts

arts.uchicago.edu



PERFORMANCE PENTHOUSE

TABLE OF CONTENTS

Photo: Northeast Perspective	3
General Information	4
Drawing: Multiple Configurations	5
Audio & Projection	6
Photo: Northwest Perspective	7
Lighting	8
Drawing: Repertory Plot	9
Photo: Southeast Perspective	10
Contact Information	11
Photo: Logan Center	12

PERFORMANCE PENTHOUSE





PERFORMANCE PENTHOUSE

GENERAL INFORMATION

SPACE AND LAYOUT

The Performance Penthouse is located on the 9th floor of the Logan Center with elevator access from the north side of the building. Restrooms can be found on the 8th and 10th floors.

The room is roughly 30' wide by 47' long with a 110 maximum capacity. There is no fixed seating, making the layout completely configurable. Common floor plans include high boys and/or cabaret tables for receptions, theater style seating for musical performances, and 66" round tables for a seated dinner.

STAGE FURNITURE

- Wenger "Musician" chairs
- Wenger "Classic 50" music stands
- (1) Steinway & Sons "Model B" Classic Grand (6'11")
- (4) Southern Aluminum 4'x8' stage risers:
 - Riser legs available in 8", 16" or 24" height
 - Black velour skirting available in 16" and 24" only
- (1) Wenger Director's Stand
- (1) Wenger Conductor's Podium
- (1) Standard wooden lectern

Please reserve quantities for all items at least two weeks in advance to ensure availability. A fresh piano tuning can be scheduled, when requested in advance, for \$125.

BANNED MATERIALS

We do not allow glitter, oil, paint, confetti, or open flames in the Performance Penthouse, and all water must be contained.

FLOOR MATERIAL

The floor is semi-sprung and made from unfinished reclaimed Merbau wood. There is no Marley dance flooring available for the Performance Penthouse.

The use of tape on the Penthouse floor is strictly prohibited.

ROLLER SHADES

Each window in the Performance Penthouse has a light filtering (2%) roller shade with automated control, accessible through a wall plate on the east wall.

CURTAINS

For additional room darkening, blue velour black-out curtains can be drawn across the large windows on the northeast corner. The smaller window in the southeast corner has a light filtering roller shade only.

HEARING ASSIST

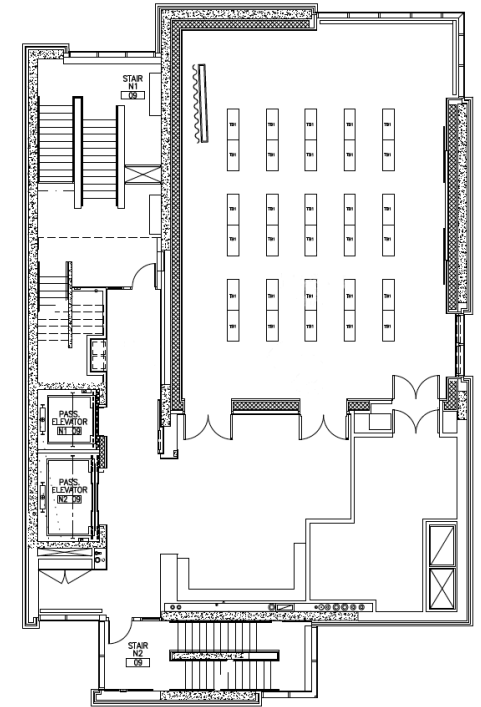
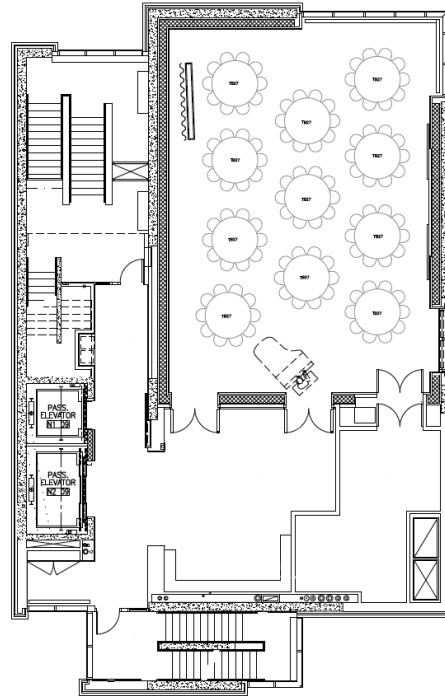
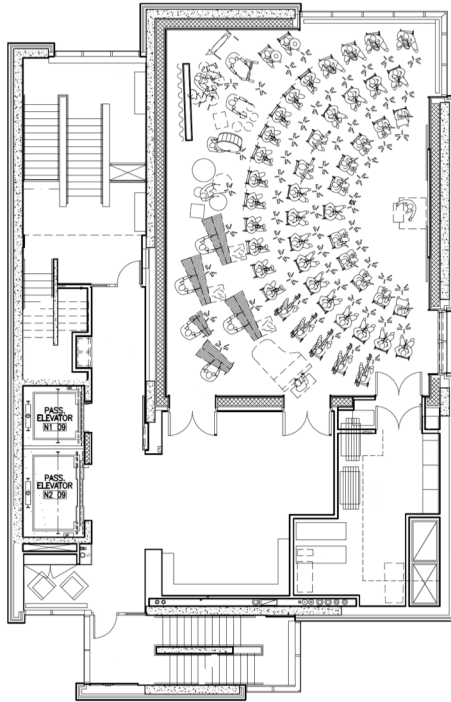
The Performance Penthouse is equipped with a "Listen" assistive listening device system. These devices receive a direct feed from the suspended in-house microphones. Assistive listening devices are available at every public performance and can be requested from the Logan Center's box office or front of house manager.

GREEN ROOM

There is no dedicated green room space for the Performance Penthouse. Upon request, and when available, additional classroom space may be booked for this purpose.

PERFORMANCE PENTHOUSE

MULTIPLE CONFIGURATIONS





PERFORMANCE PENTHOUSE

AUDIO & PROJECTION

MAIN AUDIO SYSTEM

A left-right main loudspeaker system is permanently installed on the east wall of the Performance Penthouse.

The user-friendly “plug and play” system supports line-level signal as well as two wired microphone inputs with volume control from a wall plate on the east wall.

- (2) EV QRx-115/75 speakers
- (2) XLR-F inputs for dynamic microphones
- (2) Stereo RCA line level inputs
- (1) 1/8” (3.5mm) TRS input
- (1) Audio-Technica turntable

PROJECTION SYSTEM

The Performance Penthouse maintains a digital projection system utilizing a Christie LWU505 HD projector and a 137” diagonal (16:10) drop-down projection screen centered on the east wall. Inputs available to this system include:

- (1) Pioneer BP-V6000 Blu-Ray player
- (2) HDMI inputs
- (2) VGA + 1/8” TRS inputs

All audio associated with projection content will automatically be connected to the main audio system. Independent volume control is available for all sources.

PORTABLE MIXING SYSTEM

For events that require more control (live mixing), additional audio inputs (three or more wired microphones), auxiliary outputs (videographer feed), or wireless microphones, additional equipment and staffing is required.

The Logan Center’s portable mixing system includes:

- (1) Allen & Heath MixWizard3 (16-in/6-out)
- (2) EV TX1122 portable main speakers
- (2) JBL PRX712 floor wedges
- (2) Ultimate Support TS-100B speaker stands
- (2) Shure ULX2 Beta 58 wireless microphones
- (2) Shure ULXP4 wireless receivers
- (1) Shure UA844 wireless antenna distribution
- (2) DBX 226XS dual channel compressor/limiters
- (1) Lexicon MX200 dual channel effects processor
- (1) DBX 231 stereo graphic equalizer
- (2) DBX 215 dual channel graphic equalizers
- (1) DBX DriveRack loudspeaker processor
- (1) QSC GX7 loudspeaker amplifier
- (1) Tascam SS-CDR200 recorder/CD player
- (1) Tascam DR-40 Linear PCM handheld recorder
- (1) JBL EON 618S powered subwoofer
- Additional microphones (when available)*
- Additional microphone stands (when available)*

The portable mixing system must be reserved at least two weeks in advance to ensure availability. This equipment must be installed and operated by Logan Center staff.

PERFORMANCE PENTHOUSE





PERFORMANCE PENTHOUSE

LIGHTING

REPERTORY PLOT

The repertory lighting plot in the Logan Center's Performance Penthouse serves a variety of purposes including lectures, cocktail receptions, and musical performances.

This plot offers three zones of no-color in front and down light for stage areas and two lectern specials on the east wall only. A textured template "gobo" wash is also available for ambient accent wall lighting.

Any changes to the house repertory plot must be scheduled and approved at least two weeks in advance.

CONTROL

The lighting system in the Performance Penthouse is run on a Strand ShowNet lighting network and controlled from a Strand Basic Palette II.

LIGHTING POSITIONS

East Pipe: Trim = 25' and length = 45'
(1) Lighting network port
(20) Dimmed stage pin lighting circuits

West Pipe: Trim = 25' and length = 45'
(1) Lighting network port
(20) Dimmed stage pin lighting circuits

HOUSE LIGHTING

The house lighting can be controlled from wall panels near the main entrance and on the east wall. A variety of presets are available to suit the needs of most users.

INTELLIGENT LIGHTING

The Logan Center's Performance Penthouse was designed to accommodate intelligent lighting fixtures, however its inventory contains conventional units only.

If you wish to provide intelligent lighting fixtures, DMX nodes can be used to support control by converting Strand ShowNet to DMX. Installation of intelligent fixtures must be approved and scheduled at least two weeks in advance.

STROBES/LASERS/FOG AND HAZE MACHINES

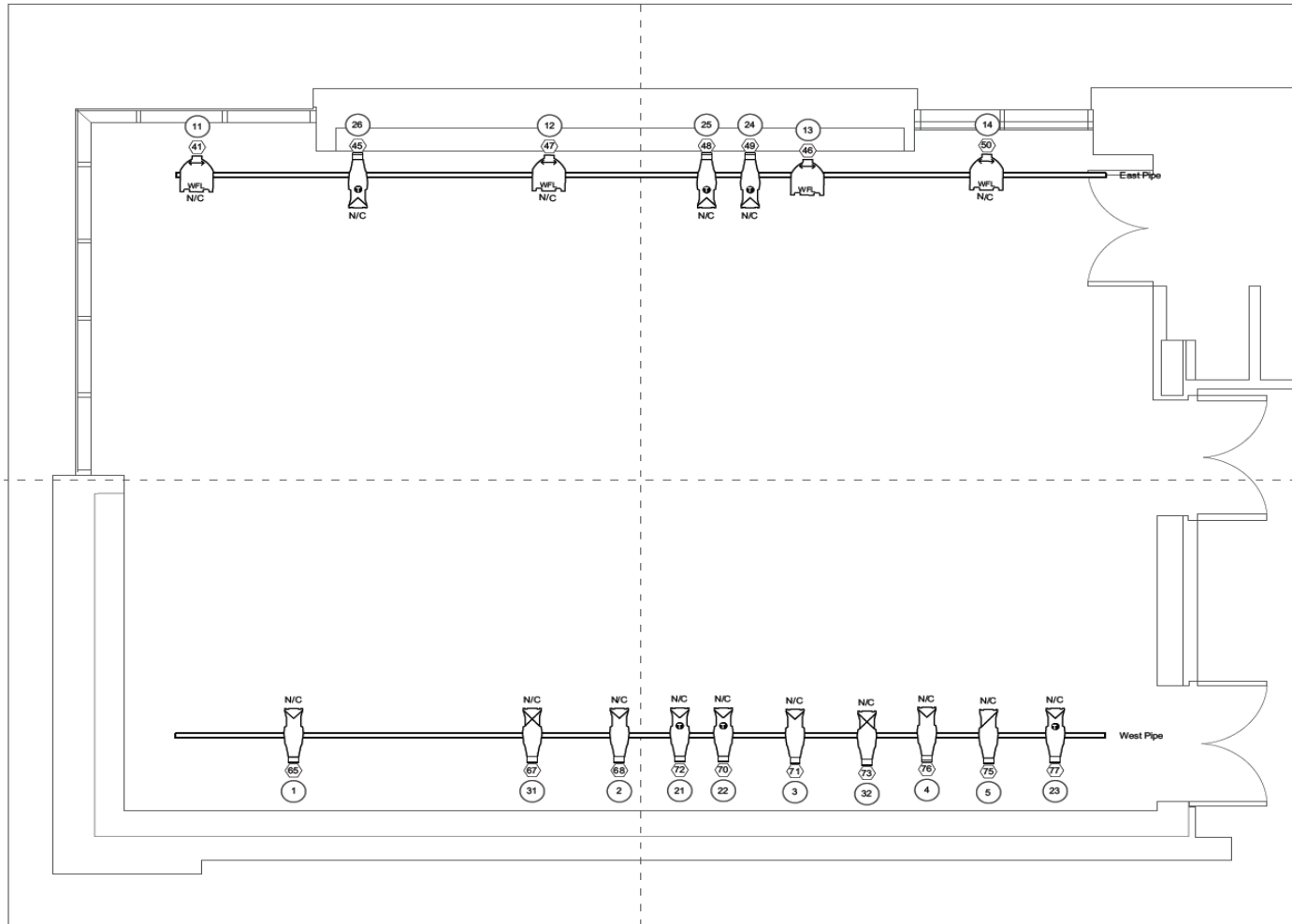
The Logan Center does not own any strobes, lasers, or atmospheric, but welcomes outside fixtures. Use of strobes, lasers, or atmospheric must be approved at least two weeks in advance for adequate public warning.

PYROTECHNICS

The use of pyrotechnics (including naked flames) is strictly prohibited.

PERFORMANCE PENTHOUSE

REPERTORY PLOT



Instrument Key

- 19" Strand Leko Lite
- 26" Strand Leko Lite
- 36" Strand Leko Lite
- 50" Strand Leko Lite

- Gobo
- Iris
- Top Hat
- Half Hat
- Barndoors
- Sidearm

- Color
- Unit Number
- Dimmer
- Channel

**PERFORMANCE
 PENTHOUSE**

REVA AND DAVID LOGAN CENTER
 915 E. 60th Street
 Chicago, IL 60637

THE UNIVERSITY OF
CHICAGO

Rep Plot
 Performance Penthouse

Date: 05/29/2017 Scale: 1/2" = 1'
 Eric Karsten ARCH C

PERFORMANCE PENTHOUSE





LOGAN CENTER

CONTACT INFORMATION

GREG REDENIUS

Associate Director for Facilities & Operations
redenius@uchicago.edu
773.702.6530

FRANK GILBERT

Production & Performance Hall Manager
frankg@uchicago.edu
773.834.2385

SEAN WILLS

Evening & Weekend Manager
swills@uchicago.edu
773.702.6414

ERIN BRENNER

Production Coordinator
erinbrenner@uchicago.edu
773.834.2385

SUMMER SPARACIN

Event Services Manager
ssparacin@uchicago.edu
773.702.4446

NORA BINGHAM

Events & Operations Coordinator
nbingham@uchicago.edu
773.834.4251

JOSH JOHNSON

Box Office Manager
jjohnson897@uchicago.edu
773.834.7521

WELCOME DESKS

773.834.7445
773.834.7446

UC POLICE DEPARTMENT

773.702.8181, or
Dial 123 from any campus phone



Reva and David Logan
Center for the Arts
915 East 60th Street
The University of Chicago
Chicago, Illinois 60637
773.702.ARTS

